

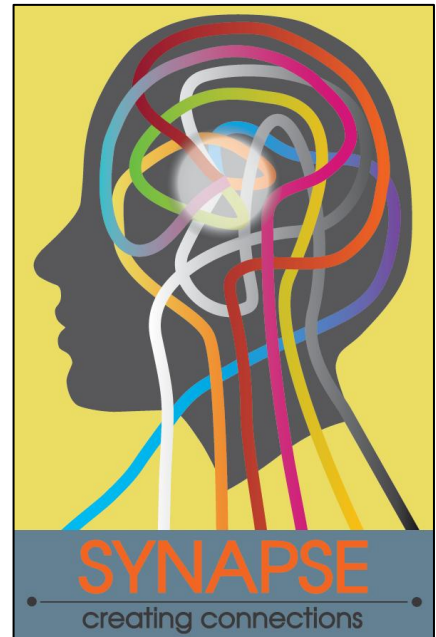
Connecting ways of knowing

How to access your own enlightenment

'Aha', the spark of enlightenment in a moment when everything makes sense! Such bridging moments were described by James Joyce as 'aesthetic arrest'.

New predicaments need new responses. These come from accessing other parts of ourselves and from connecting science with spirituality through art and visual exploration.

Join us to explore the large scale context – climate and the links between ecosystems and social systems. We gather in a place of deep spiritual history where people have been exploring the aesthetic for more than thirty years to create bridges between ways of knowing.



Eleni Rivers is an artist, teacher and cultural creative. She has facilitated numerous individuals to access their innate creativity as a way to support innovation through courage, tenacity and flexibility.

Dr Jenni Goricanec works with others to enhance the sustainability of human systems. Her practice is to help people draw on their own ways of knowing by orienting them toward the "pull" of future intentions.



[Join us for a delicious breakfast and a vibrant conversation](#)

When: Saturday 6th June, 2015. 9:00-11:30am

Where: OASES, 2 Minona St, Hawthorn

Cost: \$30/\$20, includes presentation and vegetarian breakfast buffet with vegan & gluten free options.

Register: www.oases.edu.au/breakfast or call 03 9819 3502